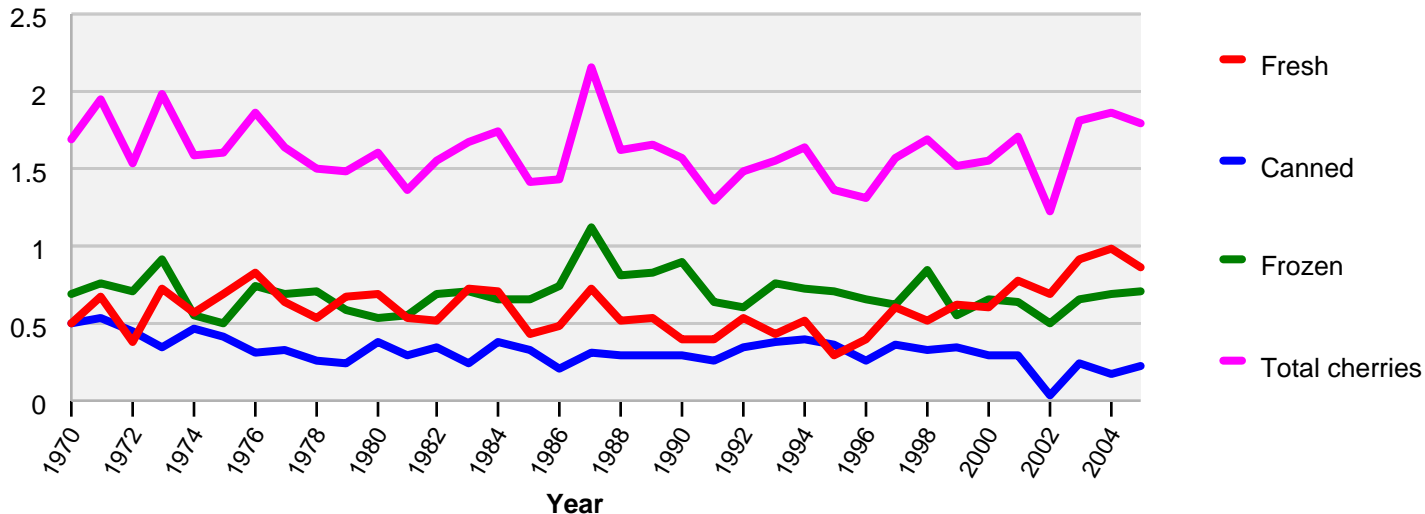


U.S. per capita food availability				
Cherries				
Farm weight, pounds per capita per year				
Year	Fresh	Canned	Frozen	Total cherries
2005	0.86	0.22	0.7	1.8
2004	0.99	0.17	0.69	1.9
2003	0.92	0.25	0.65	1.8
2002	0.7	0.04	0.5	1.2
2001	0.77	0.3	0.63	1.7
2000	0.6	0.3	0.65	1.5
1999	0.63	0.34	0.56	1.5
1998	0.52	0.33	0.85	1.7
1997	0.6	0.36	0.62	1.6
1996	0.4	0.26	0.65	1.3
1995	0.29	0.36	0.71	1.4
1994	0.52	0.39	0.72	1.6
1993	0.43	0.38	0.76	1.6
1992	0.53	0.35	0.61	1.5
1991	0.4	0.26	0.64	1.3
1990	0.39	0.29	0.89	1.6
1989	0.54	0.29	0.82	1.7
1988	0.52	0.3	0.81	1.6
1987	0.72	0.32	1.1	2.2
1986	0.49	0.2	0.74	1.4
1985	0.42	0.33	0.65	1.4
1984	0.7	0.39	0.65	1.7
1983	0.73	0.24	0.7	1.7
1982	0.52	0.35	0.68	1.6
1981	0.53	0.29	0.55	1.4
1980	0.69	0.38	0.54	1.6
1979	0.67	0.23	0.58	1.5
1978	0.53	0.25	0.71	1.5
1977	0.63	0.32	0.69	1.6
1976	0.82	0.3	0.74	1.9
1975	0.69	0.41	0.5	1.6
1974	0.58	0.47	0.54	1.6
1973	0.73	0.35	0.91	2
1972	0.38	0.45	0.7	1.5
1971	0.67	0.53	0.75	1.9
1970	0.5	0.5	0.68	1.7
Calculated from unrounded data.				
Source: USDA/Economic Research Service. Last updated Feb. 15, 2007.				

# U.S. per capita food availability

## Cherries

Farm weight, pounds per capita per year



Calculated from unrounded data.

Source: USDA/Economic Research Service. Last updated Feb. 15, 2007.