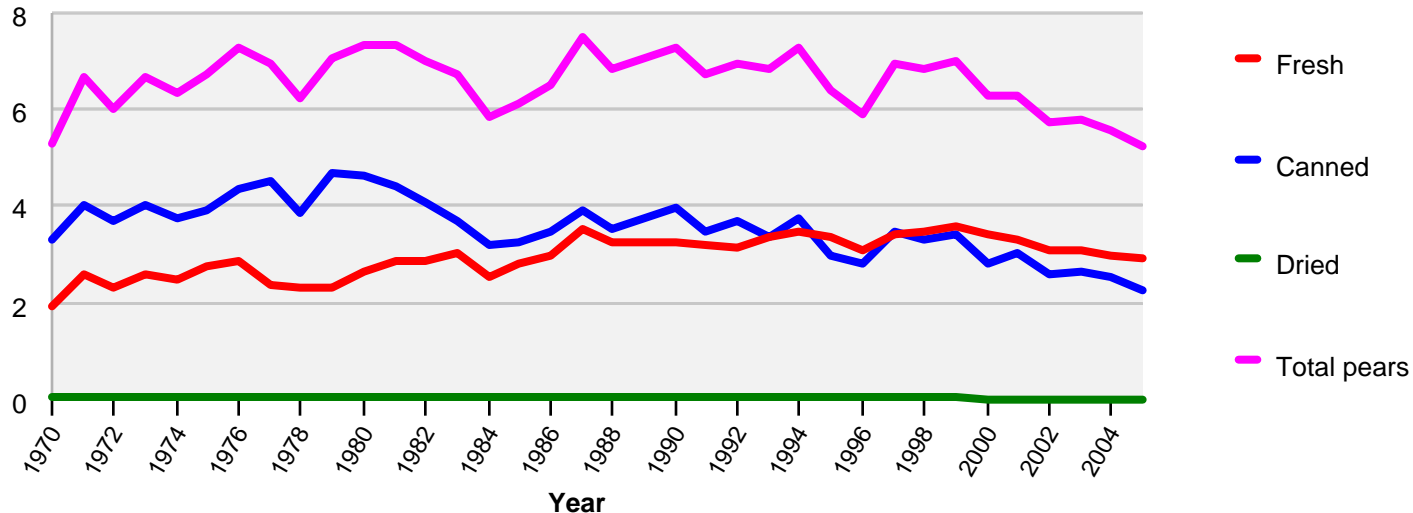


U.S. per capita food availability				
Pears				
Farm weight, pounds per capita per year				
Year	Fresh	Canned	Dried	Total pears
2005	2.9	2.3	0.02	5.2
2004	3	2.5	0.03	5.5
2003	3.1	2.7	0.03	5.8
2002	3.1	2.6	0.02	5.7
2001	3.3	3	0.02	6.3
2000	3.4	2.8	0.03	6.3
1999	3.6	3.4	0.05	7
1998	3.5	3.3	0.05	6.8
1997	3.4	3.5	0.04	7
1996	3.1	2.8	0.03	5.9
1995	3.4	3	0.04	6.4
1994	3.5	3.7	0.06	7.3
1993	3.4	3.4	0.07	6.8
1992	3.2	3.7	0.07	7
1991	3.2	3.4	0.07	6.7
1990	3.3	4	0.06	7.3
1989	3.2	3.8	0.06	7
1988	3.2	3.6	0.06	6.9
1987	3.5	3.9	0.06	7.5
1986	3	3.5	0.06	6.5
1985	2.8	3.2	0.06	6.1
1984	2.6	3.2	0.06	5.8
1983	3	3.7	0.06	6.7
1982	2.9	4.1	0.06	7
1981	2.8	4.4	0.06	7.3
1980	2.6	4.6	0.06	7.3
1979	2.3	4.7	0.06	7.1
1978	2.3	3.8	0.06	6.2
1977	2.4	4.5	0.06	7
1976	2.9	4.4	0.06	7.3
1975	2.8	3.9	0.06	6.7
1974	2.5	3.8	0.06	6.3
1973	2.6	4	0.06	6.7
1972	2.3	3.7	0.06	6
1971	2.6	4	0.06	6.7
1970	1.9	3.3	0.06	5.3
Calculated from unrounded data.				
Source: USDA/Economic Research Service. Last updated Feb. 15, 2007.				

# U.S. per capita food availability

Pears

Farm weight, pounds per capita per year



Calculated from unrounded data.

Source: USDA/Economic Research Service. Last updated Feb. 15, 2007.